

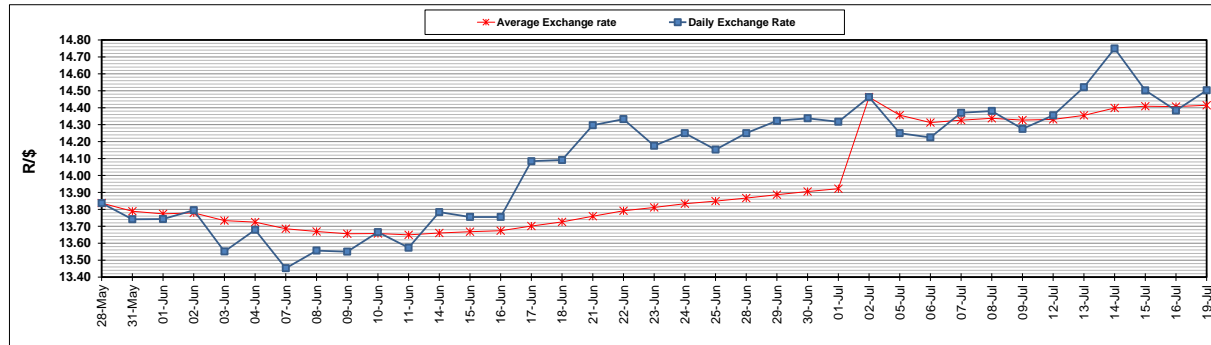
	PETROL 95 ULP	PETROL 93 ULP & LRP	DIESEL 0.05%	DIESEL 0.005%	ILL. PAR.
GAUTENG PUMP PRICE (SA c/l) AS FROM 07/07/2021	1,739.000	1,720.000	-	-	-
WHOLESALE PRICE (SA c/l) AS FROM 07/07/2021	-	-	1,508.620	1,512.020	913.488
SINGLE NATIONAL MAXIMUM RETAIL PRICE	-	-	-	-	1,150.000
BASIC FUEL PRICE - 19/07/2021 (SA c/l)	789.559	776.315	733.919	737.091	715.823
PRESS RELEASE CONTRIBUTION TO BFP 07/07/2021 - 19/07/2021 (SA c/l)	743.170	734.170	721.630	725.030	700.128
UNIT OVER/(UNDER) RECOVERY - 19/07/2021 (SA c/l)	(46.389)	(42.145)	(12.289)	(12.061)	(15.695)
AVERAGE BASIC FUEL PRICE 02/07/2021 - 19/07/2021	817.799	804.490	761.153	763.887	740.046
AVERAGE UNIT OVER/(UNDER) RECOVERY 02/07/2021 - 19/07/2021	(81.129)	(77.570)	(50.023)	(49.107)	(48.918)

ANALYSIS MOVEMENT OF AVERAGE OVER/(UNDER) RECOVERY

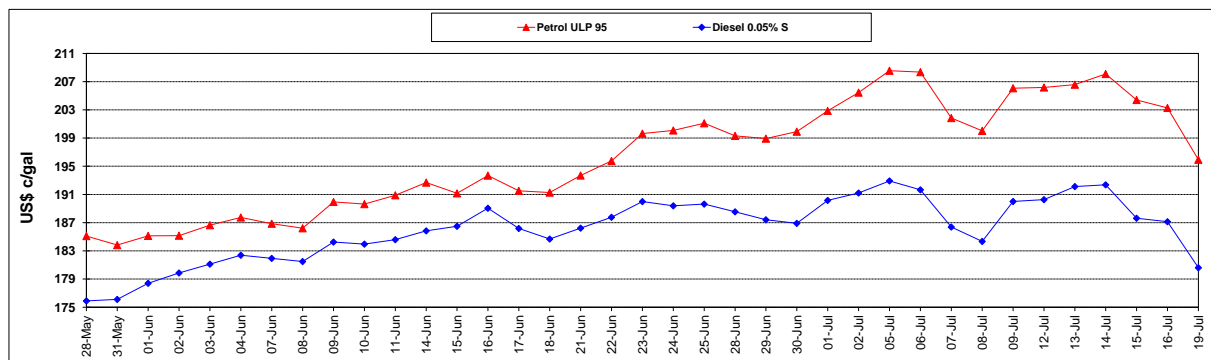
	PETROL 95	PETROL 93	DIESEL 0.05%	DIESEL 0.005%	ILL. PAR.
- MOVEMENT IN INTERNATIONAL PRODUCT PRICES	(53.171)	(50.067)	(24.001)	(22.992)	(23.618)
- MOVEMENT IN EXCHANGE RATE	(27.958)	(27.503)	(26.022)	(26.115)	(25.300)
AVERAGE UNIT OVER/(UNDER) RECOVERY 02/07/2021 - 19/07/2021	(81.129)	(77.570)	(50.023)	(49.107)	(48.918)

R/\$ EXCHANGE RATE - (R/\$14.5028- 19/07/2021)

EXCHANGE RATE USED IN BASIC FUEL PRICE



INTERNATIONAL PRODUCT PRICES OF BASKET USED IN BASIC FUEL PRICE



BASIC FUEL PRICE IN SA CENTS PER LITRE

